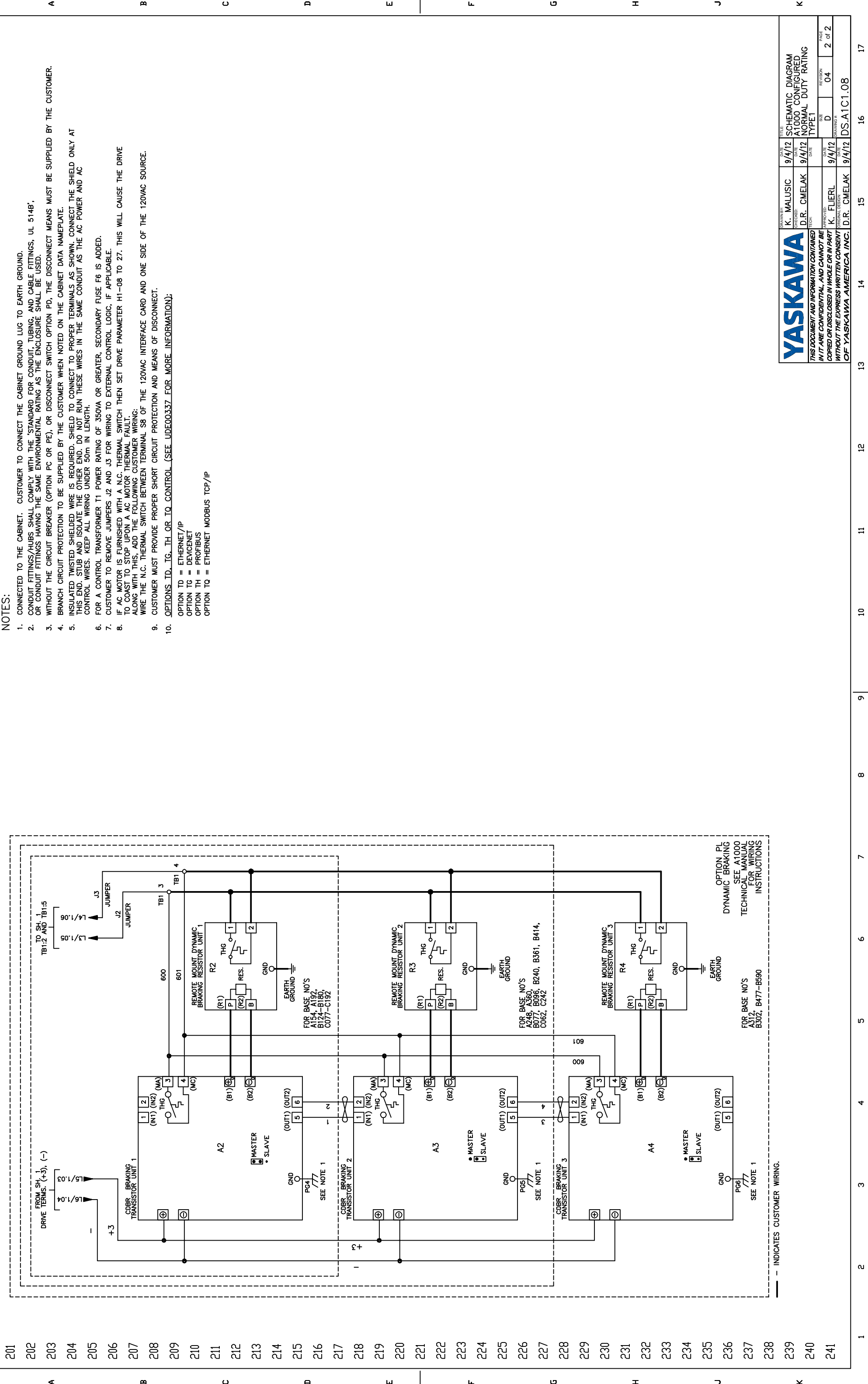


17 16 15 14 13 12 11 10 9 8 7 6 5 4 3 2 1



NOTES:

1. CONNECTED TO THE CABINET. CUSTOMER TO CONNECT THE CABINET GROUND LUG TO EARTH GROUND.
2. CONDUIT FITTINGS/HUBS SHALL COMPLY WITH THE 'STANDARD FOR CONDUIT, TUBING, AND CABLE FITTINGS, UL 514B', OR CONDUIT FITTINGS HAVING THE SAME ENVIRONMENTAL RATING AS THE ENCLOSURE SHALL BE USED.
3. WITHOUT THE CIRCUIT BREAKER (OPTION PC OR PE), OR DISCONNECT SWITCH (OPTION PD), THE DISCONNECT MEANS MUST BE SUPPLIED BY THE CUSTOMER.
4. BRANCH CIRCUIT PROTECTION TO BE SUPPLIED BY THE CUSTOMER WHEN NOTED ON THE CABINET DATA NAMEPLATE.
5. INSULATED TWISTED SHIELDED WIRE IS REQUIRED. SHIELD TO CONNECT TO PROPER TERMINALS AS SHOWN. CONNECT THE SHIELD ONLY AT THIS END. STUB AND ISOLATE THE OTHER END. DO NOT RUN THESE WIRES IN THE SAME CONDUIT AS THE AC POWER AND AC CONTROL WIRES. KEEP ALL WIRING UNDER 50m IN LENGTH.
6. FOR A CONTROL TRANSFORMER T1 POWER RATING OF 350VA OR GREATER, SECONDARY FUSE F6 IS ADDED.
7. CUSTOMER TO REMOVE JUMPERS J2 AND J3 FOR WIRING TO EXTERNAL CONTROL LOGIC, IF APPLICABLE.
8. IF AC MOTOR IS FURNISHED WITH A N.C. THERMAL SWITCH THEN SET DRIVE PARAMETER H1-08 TO 27. THIS WILL CAUSE THE DRIVE TO COAST TO STOP UPON A AC MOTOR THERMAL FAULT. ALONG WITH THIS, ADD THE FOLLOWING CUSTOMER WIRING: WIRE THE N.C. THERMAL SWITCH BETWEEN TERMINAL S8 OF THE 120VAC INTERFACE CARD AND ONE SIDE OF THE 120VAC SOURCE.
9. CUSTOMER MUST PROVIDE PROPER SHORT CIRCUIT PROTECTION AND MEANS OF DISCONNECT.
10. OPTIONS_ID, TG, TH OR IQ CONTROL (SEE UDE00337 FOR MORE INFORMATION);

- OPTION TD = ETHERNET/IP
- OPTION TG = DEVICENET
- OPTION TH = PROFIBUS
- OPTION TQ = ETHERNET MODBUS TCP/IP

YASKAWA		DATE	9/4/12	TITLE	SCHEMATIC DIAGRAM
DRAWN BY	K. MALUSIC	DATE	9/4/12	DATE	9/4/12
CHECKED	D.R. CMELAK	DATE	9/4/12	DATE	9/4/12
TECH		DATE		DATE	
PROVISED	K. FLIERL	DATE	9/4/12	DATE	9/4/12
APPROVED		DATE		DATE	
THIS DOCUMENT AND INFORMATION CONTAINED HEREIN IS CONFIDENTIAL AND CANNOT BE COPIED OR DISCLOSED IN WHOLE OR IN PART WITHOUT THE EXPRESS WRITTEN CONSENT OF YASKAWA AMERICA, INC.		SIZE	D	04	2 of 2
		DRAWING #	DS-A1C1.08		